



## ATH1G18A

- Antenna
- 1GHz-18GHz

### Features

The Model ATH1G18A is a wide band, high gain, microwave horn antenna that provides a minimum gain of 7dB over isotropic over the frequency range 1GHz to 18GHz. The ATH1G18A supplies the constant high intensity fields necessary for RFI/EMI field testing within and beyond the confines of a shielded room and is also designed to perform emissions measurements when calibrated. The Model ATH1G18A is compact and light weight for ready mobility, yet is built tough enough for the extra demands of outdoor use and easily mounts on a tripod. The

ATH1G18A provides the 1-18GHz response required for many often-used test specifications.

The ATH1G18A can be custom calibrated to the user's requirements. The calibrated model is designated by adding a 'CC' suffix to the model name. Calibration details must be provided using Form 701. Contact factory for details.

The export classification for this equipment is EAR99. These commodities, technology or software are controlled for export in accordance with the U.S. Export Administration Regulations. Diversion contrary to U.S. law is prohibited.

### Specifications

**FREQUENCY RANGE:** 1-18GHz

**POWER INPUT (maximum):**  
300 Watts CW up to 7 GHz  
Above 7GHz, derate linearly to 175 watts at 18 GHz (See graph)

**GAIN (over isotropic):** See Curve

**IMPEDANCE:** 50 ohms nominal

**VSWR:** Typical 2:1

**BEAM WIDTH (average):**

E Plane: See Curve

H Plane: See Curve

**CONNECTOR:** N(F) Precision

**MOUNTING PROVISIONS:** Tripod mounting bracket with 1/4-20 tapped hole. Bracket allows rotating antenna on boresight for polarization change.

**WEIGHT:** 1.8 kg (4 lbs)

**SIZE (WxHxD):** 24.1 x 15.2 x 22.9 cm (9.5 x 6 x 9 in)

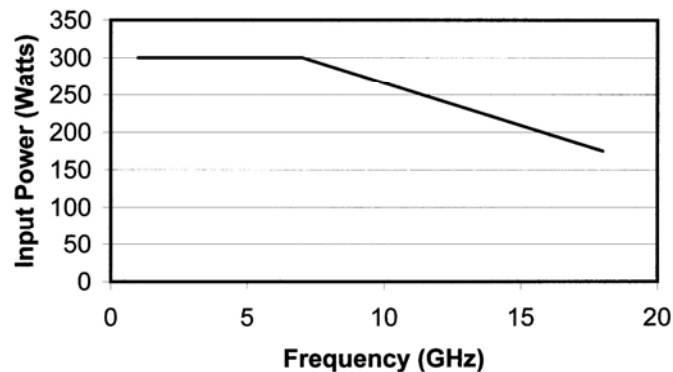
**EXPORT CLASSIFICATION:** EAR99

AR RF/Microwave  
Instrumentation  
160 School House Rd  
Souderton, PA 18964  
215-723-8181

For an applications engineer call: 800.933.8181

[www.arworld.us](http://www.arworld.us)

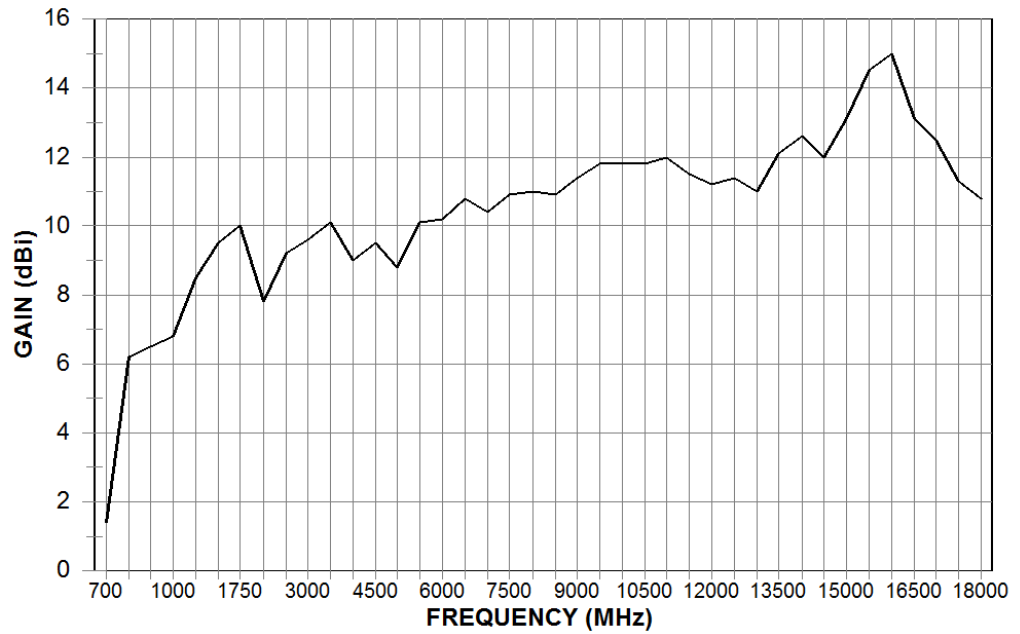
**Input Power**



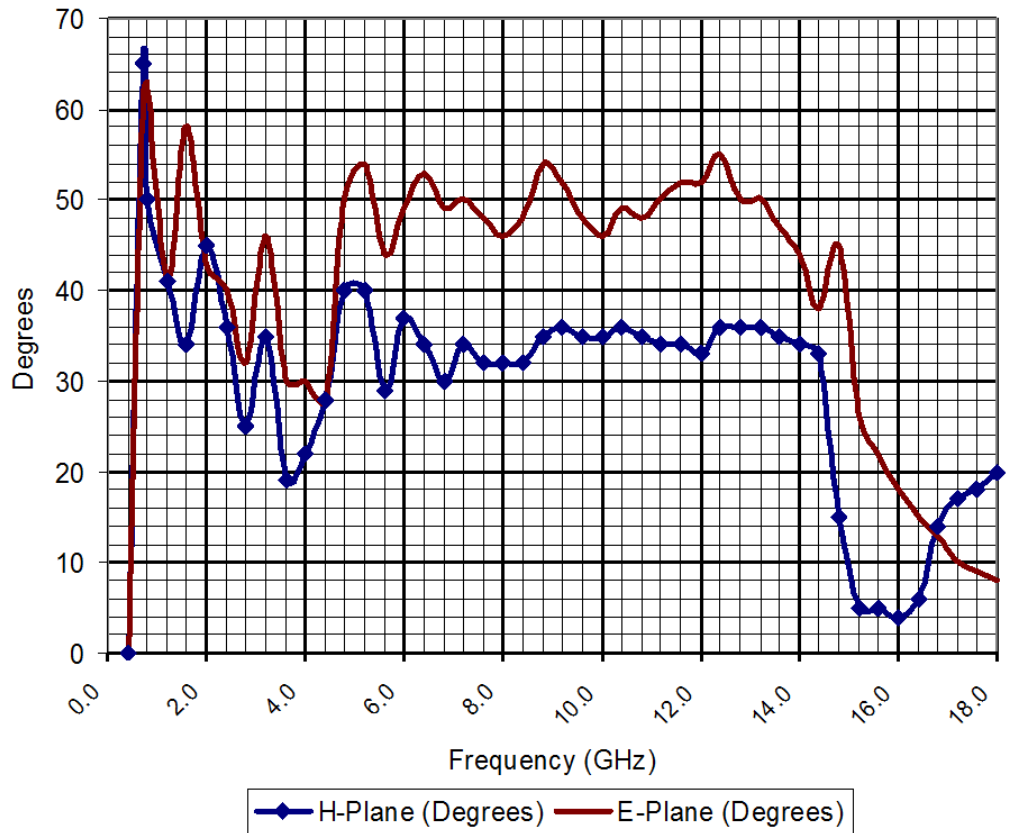
# ATH1G18A

- Antenna
- 1GHz-18GHz

ATH1G18A GAIN



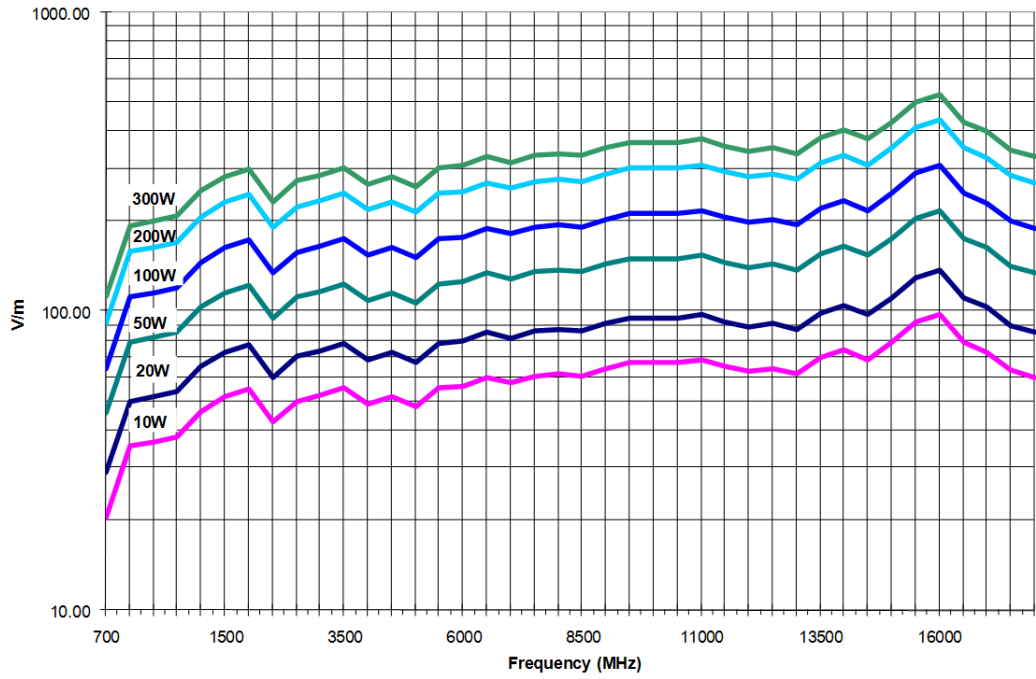
ATH1G18A 3dB BEAMWIDTH



# ATH1G18A

- Antenna
- 1GHz–18GHz

### ATH1G18A FIELD STRENGTH @ 1 METER



### ATH1G18A FIELD STRENGTH @ 3 METERS

