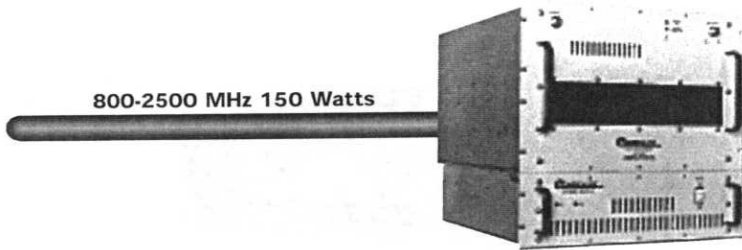
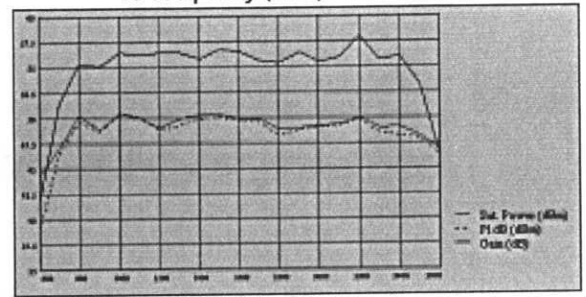


WIRELESS BAND LINEAR AMPLIFIERS



P1 dB, Sat Power and Small Signal Gain vs Frequency (MHz) AR88258-60



Series AR Wireless

DESCRIPTION:

Series AR wireless amplifiers are rack-mountable units which incorporate the Series AM amplifier in a cabinet containing a built-in universal AC power supply (for models up to 100 watts). Models are available for operation at frequencies from 800 to 3600 MHz and power from 10 to 300 watts. They are forced-air cooled by blowers built into the mechanical package. AR models are also available with an optional IEEE BUS for remote control and monitoring (ARD version).

FEATURES:

- Frequency Range: 800 MHz to 3.6 GHz; bandwidths to multi-octave
- Power Output: 10 to 300 watts
- CE Compliant
- Universal AC input (Models up to 100 watts)

ELECTRICAL

Input Overdrive 10 dB above 1 dB compression
 RF Input Signals..... CW, FM, AM, and pulse/phase modulation
 RF Input Level 0 to -5 dBm Typical for rated power out put
 Small Signal Gain Flatness:
 • AR88258 & AR8829 ±2.0 dB
 • AR178238 & AR17839 ±1.0 dB
 • AR88368 ±2.0 dB
 Noise Figure 10 dB Typical
 Harmonics..... -20 dBc
 Spurious Signals -60 dBc
 Input VSWR 2:1
 Load VSWR Open or short-circuit protected, unconditionally stable
 RF Connector In/Out
 • Up to 50 W Type N, female bulkhead front panel mounted
 • > 50 W Type N, female bulkhead rear panel mounted
 AC Input Universal AC input for models up to 100 watts
 Units above 100 watts are supplied at 220 VAC

AVAILABLE OPTIONS

- IEEE 488 BUS
- Gain Control
- Digital Power Meter
- Rack Mounting Slides

For Environmental Specifications, see Page 18, Table 2.

NEW

Model No.	Frequency Range (MHz)	Power Output (W @ 1dB)	Dimensions (h x w x l) <small>in</small> / <small>cm</small>
AR88258-10	800-2500	10	5.25 x 19.0 x 22.0 13.34 x 48.26 x 55.88
AR88258-30	800-2500	30	5.25 x 19.0 x 22.0 13.34 x 48.26 x 55.88
AR88258-60	800-2500	60	7.0 x 19.0 x 22.0 17.78 x 48.26 x 55.88
AR88258-150	800-2500	150	17.25 x 19.0 x 26.25 44.45 x 48.26 x 66.67
AR88368-20	800-3600	20	5.25 x 19.0 x 22.0 13.34 x 48.26 x 55.88
AR8829-10	800-2000	10	5.25 x 19.0 x 22.0 13.34 x 48.26 x 55.88
AR8829-30	800-2000	30	5.25 x 19.0 x 22.0 13.34 x 48.26 x 55.88
AR8829-50	800-2000	50	5.25 x 19.0 x 22.0 13.34 x 48.26 x 55.88
AR8829-100	800-2000	100	8.75 x 19.0 x 22.0 22.23 x 48.26 x 55.88
AR178238-10	1700-2300	10	5.25 x 19.0 x 22.0 13.34 x 48.26 x 55.88
AR178238-20	1700-2300	20	5.25 x 19.0 x 22.0 13.34 x 48.26 x 55.88
AR178238-30	1700-2300	30	5.25 x 19.0 x 22.0 13.34 x 48.26 x 55.88
AR178238-50	1700-2300	50	5.25 x 19.0 x 22.0 13.34 x 48.26 x 55.88
AR178238-100	1700-2300	100	8.75 x 19.0 x 26.0 22.23 x 48.26 x 66.04
AR178198-200	1750-1850	200	12.25 x 19.0 x 26.0 31.12 x 48.26 x 66.04
AR178228-300	1700-2120	300	15.75 x 19.0 x 26.0 40.0 x 48.26 x 66.04
AR17839-10	1700-3000	10	5.25 x 19.0 x 22.0 13.34 x 48.26 x 55.88
AR17839-30	1700-3000	30	5.25 x 19.0 x 22.0 13.34 x 48.26 x 55.88
AR17839-50	1700-3000	50	8.75 x 19.0 x 22.0 22.23 x 48.26 x 55.88

Specifications are subject to change without notice.