

240L POWER AMPLIFIER

**40 Watts
RF Power For:**

- Ultrasonic
- Testing
- Laboratory Use



Featuring:

- 10 KHz – 12 MHz
- Power Measurement
 - Forward & Reflected
- Instantaneous Bandwidth
- Solid State Reliability
- Forced Air Cooling

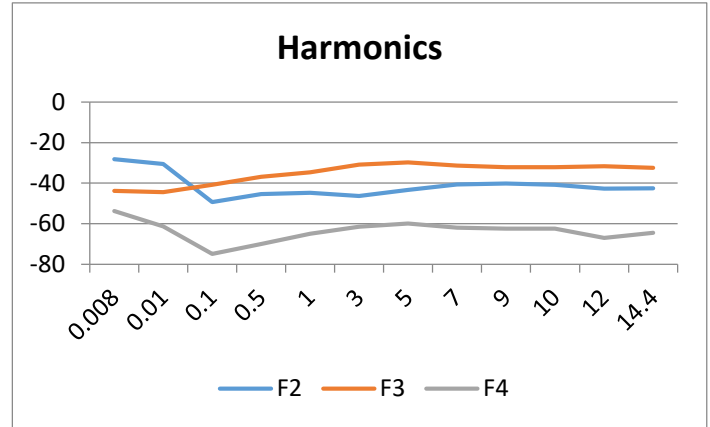
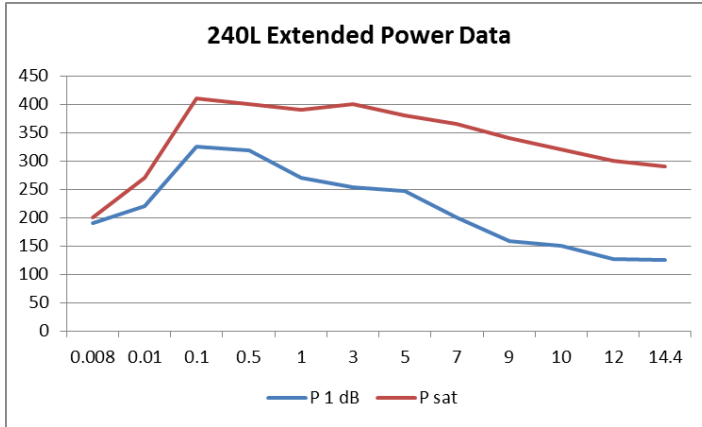


E&I 240L Specifications

| | |
|------------------------------------|--|
| Class of Operation: | Class A |
| Frequency Coverage: | 10 KHz – 12 MHz |
| Rated Power: | 40 Watts P1dB Compression |
| Saturated Power: | 100 Watts |
| Power Gain: | 50 dB nominal |
| Gain Flatness: | +/- 1.5 dB |
| Input Power for Rated Pout: | 0.4 mW / -4dBm |
| Input Impedance / VSWR: | 50 Ω / 1.5:1 maximum |
| Output Impedance / VSWR: | 50 Ω / 2:1 maximum |
| Harmonic Level: | < -25 dBc @ 40W Pout |
| Ruggedness: | ∞:1 VSWR |
| Stability: | Unconditional into any passive or reactive load |
| Protection: | Unit will withstand input signal of +13 dBm without damage (1.0 V rms) max. |
| Third Order Intercept: | IP3 ~ 59 dBm |
| AC Input: | 100 – 240 VAC 47-63 Hz Current at rated power 3 A @ 120V 1.5 A @ 240V |
| Temperature Range: | 0° – 40° C |
| Cooling: | Forced Air |
| Dimensions (H x W x D): | 5.3 x 16.5 x 18.4 inches 134.5 x 420 x 467 mm |
| Weight: | 32.5 lbs (14.8 Kg) |
| Connectors: | BNC |
| Rack Mounting: | Optional |
| RF Input Signal: | AM, FM, SSB, Pulsed |



240L POWER AMPLIFIER



Protection:

- Software Overdrive Limit: 100 Watts
- Software Reverse Power Limit: 100 Watts

Performance into 50 ohms

| Input | | | | Amplifier Gain Nominal dB | Output | | | |
|----------------------|--------------|----------------|----------------|---------------------------------|---------------------|--------|----------------|----------------|
| Input Power Watts | -6.02 dBm | V p-p Volts | V rms Volts | | Output Power dBm | Watts | V p-p Volts | V rms Volts |
| 0.000250 | -6.02 | 0.32 | 0.11 | 50 | 43.98 | 25.00 | 100.00 | 35.36 |
| 0.0004 | -3.98 | 0.30 | 0.14 | 50 | 46.02 | 40.00 | 126.49 | 44.72 |
| 0.0006 | -2.50 | 0.47 | 0.17 | 50 | 47.50 | 56.25 | 150.00 | 53.03 |
| 0.0010 | 0.00 | 0.63 | 0.22 | 50 | 50.00 | 100.00 | 200.00 | 70.71 |



Electronics & Innovation, Ltd.
 150 Research Blvd.
 Rochester, NY 14623
 Tel: 585-214-0598 / Fax: 585-214-0580
 www.eandiltd.com