

403LA POWER AMPLIFIER

3 Watt Linear UHF Amplifier For:

- Signal Distribution
- Communications
- Lab Use



Featuring:

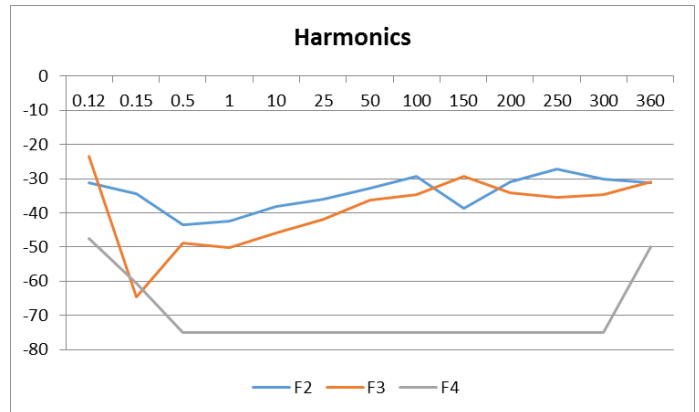
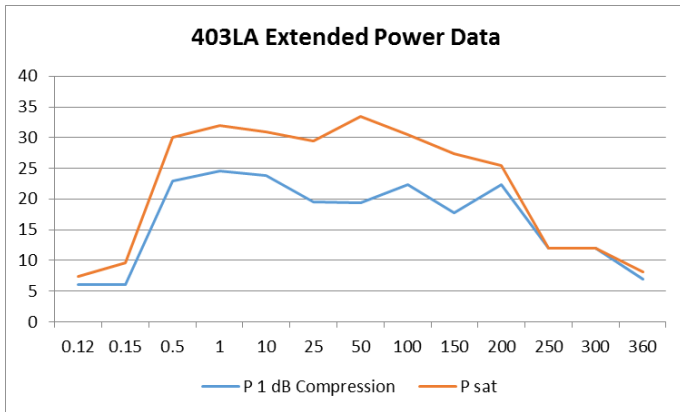
- 150 KHz – 300 MHz
- Rugged Compact Design
- Low Distortion
- Solid State Reliability
- Forced Air Cooling

E&I 403LA Specifications

Class of Operation:	Class A
Frequency Coverage:	150 KHz – 300 MHz
Rated Power:	3.0 Watts
Saturated Power:	8 Watts
Power Gain:	37 dB nominal
Gain Flatness:	+/- 2dB
Input Power for Rated Pout:	1 mw (0 dBm)
Input Impedance / VSWR:	50 Ω / 1.5:1
Output Impedance / VSWR:	50 Ω / 2:1
Harmonic Level:	< -25 dBc @ 3W Pout
Ruggedness:	∞:1 VSWR
Stability:	Unconditional into any passive or reactive load
Protection:	Unit will withstand input signal of +13 dBm without damage (1.0 V rms) max.
Third Order Intercept:	IP3 ~ 45 dBm typical
AC Input:	100 – 240 VAC 47-63 Hz 1 A @ 120V 0.5 A @ 240V
Temperature Range:	0° – 45° C
Cooling:	Forced Air
Dimensions (H x W x D):	3.5 x 6.2 x 10.5 inches 88 x 157 x 267.5 mm
Weight:	7 lbs (3.2 Kg)
Connectors:	BNC
Rack Mounting:	Optional
RF Input Signal:	AM, FM, SSB, Pulsed



403LA POWER AMPLIFIER



Performance into 50 ohms

Input				Amplifier Gain Nominal dB	Output			
Input Power Watts	dBm	V p-p Volts	V rms Volts		Output Power dBm	Watts	V p-p Volts	V rms Volts
0.000200	-7.00	0.28	0.10	37	30.00	1.00	20.00	7.07
0.0004	-3.48	0.42	0.15	37	33.52	2.25	30.00	10.61
0.0008	-0.98	0.57	0.20	37	36.02	4.00	40.00	14.14
0.0012	0.96	0.71	0.25	37	37.96	6.25	50.00	17.68



Electronics & Innovation, Ltd.
 150 Research Blvd.
 Rochester, NY 14623
 Tel: 585-214-0598 / Fax: 585-214-0580
 www.eandiltd.com