

TRANSIENT EMISSION SET

AUTOMOTIVE TRANSIENT EMISSION MEASUREMENTS AS PER ISO 7637-2



FOR TESTS ACCORDING TO ...

- › ISO 7637-2:2004
- › ISO 7637-2:2011

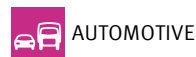
TEST SET FOR THE MEASUREMENT OF AUTOMOTIVE TRANSIENT EMISSIONS AS PER ISO 7637

The measurement of automotive transient emissions as per ISO 7637-2 requires an electronic switch, a mechanical switch and an artificial network. The electronic switch generates slow transients while the mechanical switch, a typical relay used in the vehicle, generates the fast transients. The artificial network represents the typical impedance of the wiring harness. The AN 200N100 is designed to meet the requirements of ISO 7637-2, CISPR 25 / ISO 11452-4 and CISPR 16-1-2 and can be switched accordingly.

HIGHLIGHTS

- › **BS 200N100 - Electronic switch, 60V DC/100A:**
- › - Volt.Drop <1.2V@100A, <0.2V@25A
- › - Peak voltage max. 1,000V
- › - Reverse-polarity/short-circuit protected
- › **BSM 200N40 - Mechanical switch, 12/24V DC/40A**
- › **AN 200N100 - ISO 7637-2, CISPR 25, CISPR 16-1-2**
- › - Frequency range 100kHz - 125MHz
- › - 1,000V DC, 250V AC (up to 1kHz)

APPLICATION AREAS



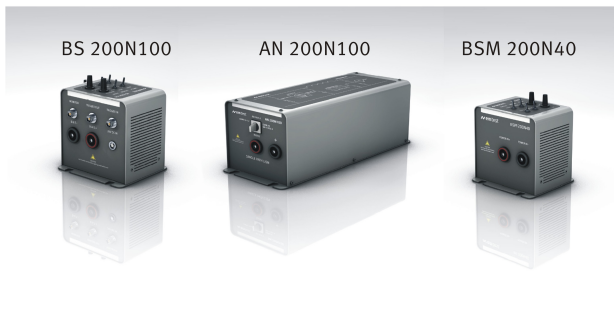
TECHNICAL DETAILS

TRANSIENT EMISSION SET - THE BENEFITS

The EM TEST Transient Emission Set consisting of the BS 200N100 electronic switch, the artificial network AN 200N100 and the BSM 200N40 mechanical switch is an easy-to-use, economic and compact solution, fully compliant to ISO 7637-2.

Small size of the equipment and short interconnections allow to meet the distances specified by the standard. An optional resistor box RS-Box with shunt resistor is available for transient emission measurements as per ISO 7637-2:2004 and ISO 7637-2:2011.

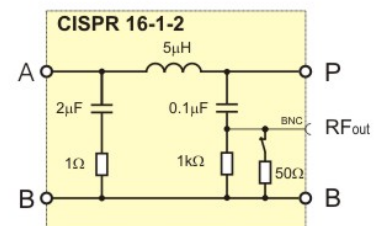
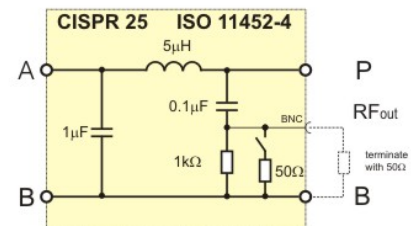
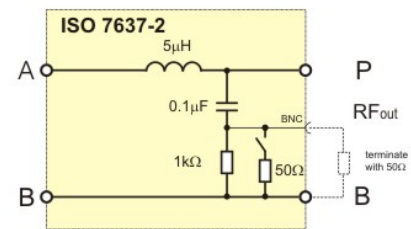
The RS-Box offers the required 40ohm shunt resistor and other demanding shunt resistors values of e.g. 10ohm, 20ohm and 120ohm.



MULTI-PURPOSE AN 200N100

THREE-IN-ONE ARTIFICIAL NETWORK

The AN 200N100 is the multi-purpose artificial network designed to cover four different test requirements. The various configurations are selected by two switches. One switch is used to configure the AN 200N100 mains input (no capacitor as per ISO 7637-2, 1uF capacitor across the mains input as per CISPR 25 and ISO 11452-4 or 2uF capacitors in series with a 1ohm resistor as per CISPR 16-1-2). A second switch is used to switch in the internal 50ohm termination resistor as required. The AN 200N100 is fully adapted to the various test requirements and shows the typical impedance characteristics according to the different standards.



TECHNICAL DETAILS

BS 200N100 - ELECTRONIC SWITCH

SPECIFICATION	
Operation voltage	Max. 60V DC
Operation current	Max. 100A continuous
Peak voltage	Max. 1,000V
Inrush current	Max. 400A for 200ms
Voltage drop	< 1.2V at 100A < 0.2V at 25A
Overvoltage protection	By varistors
Overload protection	Short-circuit protected Reverse-polarity protected

SWITCH CHARACTERISTICS	
Switching time	300ns +/- 20% into test load 50uH/0.6ohm
On/Off time	10ms to 500ms, continuously selectable via potentiometer
Operation mode	Indicated by LED

TRIGGER	
Manual	Manual trigger of a single event
Auto	Automatic trigger with min. 0.1Hz to max. 1Hz repetition, continuously selectable by potentiometer
External In	External trigger, negative going edge 0V, BNC input 10V

MEASUREMENT	
Voltage monitor	BNC output; divider 1:200 +/-5%
Trigger Out	BNC output; negative going edge 0V

GENERAL DATA	
Dimensions, weight	90mm x 125mm x 120mm (LxWxH) (without connecting sockets) approx. 1.3kg
Supply voltage	24V DC via mains supply adapter

AN 200N100 - ARTIFICIAL NETWORK

TECHNICAL DATA	
as per	ISO 7637-2, CISPR 25, ISO 11452-4 and CISPR 16-1-2, switchable
Frequency range	0.1 to 125MHz
Operation voltage	1,000V DC/250V AC up to 1kHz
Operation current	Max. 100A AC/DC continuous
Inrush current	Max. 400A for 200ms
Impedance	5uH // 50ohm for details see diagrams on page 2
Insertion loss	less than 3dB DUT to receiver output
Inductance	5uH +/-10% air-core coil
Coupling capacitor	0.1uF

CONNECTIONS	
Power supply/DUT connection	High-current connectors up to 100A 4mm safety lab connectors up to 32A
Test output	BNC-connection

GENERAL DATA	
Dimensions	318 x 126 x 122 mm (L x W x H) (without connecting sockets)
Weight	approx. 2.8kg

TECHNICAL DETAILS

BSM 200N40 - MECHANICAL SWITCH

SPECIFICATIONS

Operation voltage DUT supply	12V/24V
Operation current	Max. 40A DC continuous, resistive load
Maximum current I _{max}	40A @13.5V 20A @27.0V
Contact	high purity silver contacts, no suppression across relay contact, insulated from the coil circuit

SWITCH CHARACTERISTICS

Pulse duration	> 50ms up to 500ms
Pulse repetition	1s to > 10s
Operating mode	Indicated by LED

TRIGGER

Manual	Manual trigger of a single event
Auto	Automatic trigger with min. 0.1Hz to max. 1Hz repetition, continuously selectable by potentiometer
External	External trigger negative going edge 0V, BNC input
Operation	Indicated by LED

MEASUREMENT

Voltage monitor	BNC output; divider 1:200 +/-5%
CRO trigger	BNC output, negative going edge 0V

GENERAL DATA

Dimensions, weight	90mm x 105mm x 104mm (LxWxH) (without connecting sockets) approx. 0.8kg
Supply voltage	24V DC via mains supply adapter

OPTIONS

OPTIONAL ACCESSORIES

CA BS 200N	Calibration load 0.6ohm and 50uH for the verification of the electronic switch characteristic
RS-BOX	Shunt resistor box with R _s = 10ohm, 20ohm, 40ohm and 120ohm

COMPETENCE WHEREVER YOU ARE



CONTACT EM TEST DIRECTLY

Switzerland

EM TEST (Switzerland) GmbH > Sternenhofstraße 15 > 4153 Reinach > Switzerland
 Phone +41 (0)61/7179191 > Fax +41 (0)61/7179199
 Internet: www.emtest.ch > E-mail: sales.emtest@ametek.com

Germany

AMETEK CTS Germany GmbH > Lünener Straße 211 > 59174 Kamen > Deutschland
 Phone +49 (0)2307/26070-0 > Fax +49 (0)2307/17050
 Internet: www.emtest.com > E-mail: info.cts@ametek.de

France

EM TEST FRANCE > Le Trident - Parc des Collines > Immeuble B1 - Etage 3 > 36, rue Paul Cézanne > 68200 Mulhouse > France
 Phone +33 (0)389 31 23 50 > Fax +33 (0)389 31 23 55
 Internet: www.emtest.fr > E-mail: info@emtest.fr

Poland

EM TEST Polska > ul. Ogrodowa 31/35, 00-893 Warszawa > Polska
 Phone +48 (0)518 64 35 12
 Internet: www.emtest.com/pl > E-mail: infopolska.emtest@ametek.com

USA / Canada

AMETEK Compliance Test Solutions > 52 Mayfield Ave. > Edison > NJ 08837
 Phone +1 (732) 417-0501
 Internet: www.emtest.com > E-mail: sales.emtest@ametek.com

P.R. China

E & S Test Technology Limited > Rm 913, Leftbank > No. 68 Bei Si Huan Xi Lu > Haidian District > Beijing 100080 > P.R. China
 Phone +86 (0)10 82 67 60 27 > Fax +86 (0)10 82 67 62 38
 Internet: www.emtest.com > E-mail: info@emtest.com.cn

Republic of Korea

EM TEST Korea Limited > #405 > WooYeon Plaza > #986-8 > YoungDeok-dong > Giheung-gu > Yongin-si > Gyeonggi-do > Korea
 Phone +82 (31) 216 8616 > Fax +82 (31) 216 8616
 Internet: www.emtest.co.kr > E-mail: sales@emtest.co.kr

Information about scope of delivery, visual design and technical data correspond with the state of development at time of release. Subject to change without further notice.